

SEMICONDUCTOR INDUSTRY

Valves • Actuators • Automation Technology



DRIVING INNOVATION. UNLOCKING POTENTIAL.

EXPECT COMMITMENT

In industries where precision, reliability and purity are critical, selecting the right valve solutions is essential for smooth and efficient operations. To meet the stringent demands of ultra-pure water (UPW) systems and other critical applications in semiconductor fabrication, you need valves engineered for challenging requirements. EBRO guarantees first class quality with every supply, day after day.

ENSURING PRECISION AND PURITY

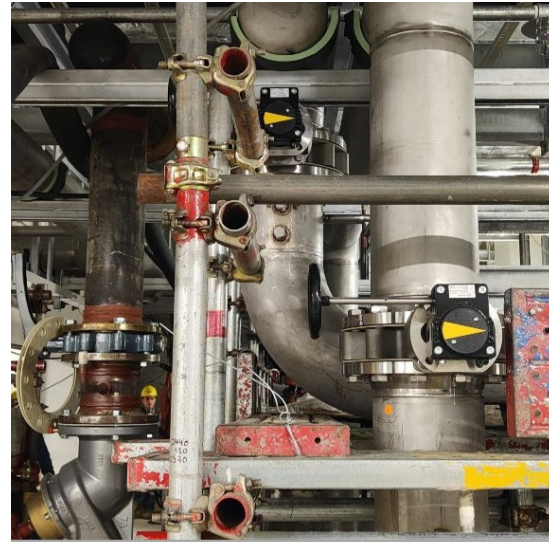
With advanced technology and a focus on durability, performance, and efficiency, our valves solutions ensure consistent and reliable operation that supports your production lines and minimizes downtime. Perfectly suited for every stage of water management— ranging from water purification and waste treatment to recycling and water reclamation — EBRO valves offer:

- **Superior chemical resistance** to handle aggressive and corrosive environments
- **Precise flow control and tight shut-off** to maintain process integrity
- **Efficient and reliable operation** that enhances productivity and reduces maintenance costs
- **Cleaned and bagged options** available for contamination-sensitive applications, ensuring the highest purity standards

GOING BEYOND

In the fast-paced semiconductor industry, our valve solutions are your top choice for preserving process integrity and cleanliness. Engineered to minimize particle contamination, our valves deliver exceptional performance, protecting wafers and enhancing yield stability.

By ensuring consistent, contamination-free flow control, we help you to increase tool uptime and cut operational costs, leading to quicker return on investment. Trust EBRO to be your partner in achieving success in semiconductor manufacturing.



“OUR TEAM AROUND THE WORLD IS A
DEDICATED RESOURCE THAT YOU CAN RELY ON.”

SOLUTIONS FOR DEMANDING REQUIREMENTS.

In the ever-evolving world of semiconductor manufacturing, meeting the highest standards of quality and efficiency is essential. At EBRO, we understand the critical importance of water treatment and management in this intricate process. Our comprehensive solutions are designed to address the demanding requirements of the semiconductor industry, ensuring optimal performance and environmental sustainability.

Managing Water from Intake to Safe Release

Raw Water Intake
UPW Pre-Treatment
UPW Makeup and Polishing
Water Recycling and reclamation
Waste Water Treatment

Key UPW Processes:

- Raw Water
- Heat Exchanger
- Multimedia Filter
- Activated Carbon Filter
- Ion Exchange
- Deionization (DI) Systems
- Reverse Osmosis (RO)
- Permeate
- Chemical Dosing
- UV Treatment
- Ozone Treatment
- Mixed Bed Exchanger
- Membrane Degasifier
- Heat Recovery
- Ultra Filtration
- Storage Tanks
- TOC (Total Organic Carbon) Removal
- Filtration Skids
- Water Recycling

Utility Processes:

- HVAC systems
- Glycol application for cooling
- CDA generation and Gas distribution, such as Compressed Dry Air, Utility Gas, Bulk Gas and Specialty Gas distribution

HIGH PERFORMANCE VALVES

Reliable under extreme conditions

The double eccentric design, high-quality materials and precision machining ensure safety even under extreme operating conditions.

Typical applications include process cooling, chilled water systems, and ultrapure water processing. HP valves are also used in CDA (Clean Dry Air) Packages for process and bulk gas distribution.



HP111 / HP114
Wafer/Lug-type
DN 50 – DN 1000 (NPS 2 – 48)



HP112
Double-flanged
DN 80 – DN 600 (NPS 3 – 24)

PTFE VALVES

Durable and safe

PTFE-lined butterfly and control valves are specially designed for use in chemically aggressive alkalis and acids. The minimum 3 mm thick lining made of pure PTFE guarantees optimum protection.

The T200 series provides reliable sealing, making it well-suited for ultra-pure water applications. These valves ensure consistent operation in Process Water, New Water, Ultra-Pure Water, and Wastewater Treatment systems, where purity and safety are essential.



T211-A
Wafer-type
DN 50 – DN 300 (NPS 2 – 12)



T214-A
Lug-type
DN 50 – DN 300 (NPS 2 – 12)

RESILIENT SEATED VALVES

Versatile and reliable

Due to their design and material variety, our concentric, resilient seated butterfly valves offer huge versatility for isolation and control applications.

These valves are well suited for a wide range of applications, including Chilled Water systems (such as FAB, CUB, and CUP), Process and New Water systems, Process Cooling and Ultra-Pure Water packages, Wastewater Treatment, Process Vacuum systems, and CDA Clean Dry Air packages for gas distribution.



Z011-A
Wafer-type
DN 20 – DN 1000 (NPS 3/4 – 40)



Z014-A
Lug-type
DN 20 – DN 600 (NPS 3/4 – 24)

For Heavy-Duty applications: F012-A

These concentric, resilient-seated double-flanged valves feature a robust body and a vulcanized (molded-in) seat, engineered for heavy-duty applications in supply lines.



EBRO Therm®: Z011-A / Z014-A
with integrated Thermometer
Z011-A/ DN 20 – DN 200
Z014-A: (NPS 3/4 – 8)



F012-A
Double-flanged
DN 50 – DN 1400 (NPS 2 – 56)



More information on
butterfly valves.

BALL VALVE

Flexible and modular

The 3-piece ball valve is characterized by its versatility and robustness, enabling easy maintenance.

The V-3MH is ideal for safely shutting off pure, neutral or aggressive liquids, gases or vapours.



V-3MH
3-piece ball valve
DN 8 – DN 100 (NPS 1/4 – 4)



More information on V-3MH ball valve

ACTUATOR TECHNOLOGY

Energy-efficient with uncompromising performance

EBRO actuators enable butterfly valves to be actuated with high-efficiency. No compromises, but rather through seamless component integration, energy efficiency is enhanced. Individual configurations of product components are possible upon customer request to minimize total cost of ownership.

The use of automated valves minimizes errors in complex systems, enhancing the safety and reliability of operations. Additionally, they enable more efficient and precise workflows, leading to a reduction in total cost ownership.



EB-SYD (Scotch-Yoke)
Pneumatic actuator
Double-acting
27 Nm – 9.768 Nm



EB-SYS (Scotch-Yoke)
Pneumatic actuator
Single-acting
35 Nm – 3.590 Nm



E50 – E210
Electric actuator
24V AC/DC, 230V AC, 400V AC
40 Nm – 4.000 Nm



More information on actuator technology.

CONTROLS

Efficiency and precision in process technology

Automated valves play a crucial role in process engineering. They control flow rates, isolate product streams, and reopen pipelines. It is essential for them to operate seamlessly with the actuation system while meeting specific customer requirements.



More information on controls.



SBU IO-Link
Smart Box Unit
Valve status monitoring



EP3
Electro-pneumatic positioner



HEADQUARTERS

EBRO ARMATUREN **Gebr. Bröer GmbH**

Karlstraße 8
D-58135 Hagen
Germany

☎ +49 2331 904-0
✉ post@ebro-armaturen.com
🌐 www.ebro-armaturen.com

Stafsjö Valves AB

Störnings Väg 3
SE-618 95 Stavsjö
Sweden

☎ +46 11 39 31 00
✉ sales@stafsjo.com
🌐 www.stafsjo.com

A Bröer Group company
www.broeer-group.com

Follow us:  