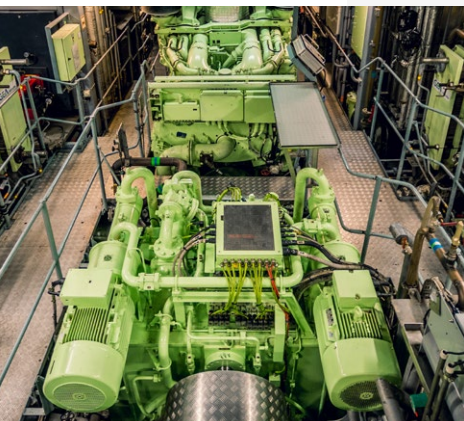
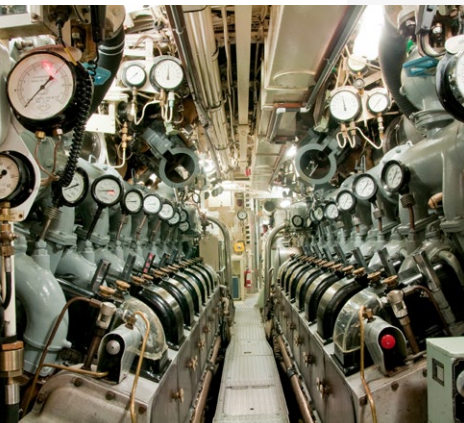


# SHIPBUILDING

Valves • Actuators • Automation Technology



# PREMIUM QUALITY. MAXIMUM PERFORMANCE.



## Isolation and Control Valves: High-End Solutions for Shipbuilding and the Maritime Industry

Maximum performance and reliability of all valves are essential in shipbuilding, as is long-term safety. EBRO provides a comprehensive product portfolio with customized solutions: featuring resilient-seated shut-off and control valves for supply lines, as well as high-performance valves for demanding applications. Alongside compact automation solutions, we support the industry's transition to digitalization in maritime operations.

### EBRO: YOUR PARTNER FOR MORE EFFICIENCY

EBRO demonstrates innovation and extensive experience through its range of resilient-seated valve designs. Their interchangeable liner minimizes repair costs, material waste and composite disposal, while also reducing CO2 emissions. Our commitment to exceptional manufacturing quality and precise valve engineering delivers significant benefits, meeting the evolving needs of the shipbuilding industry.

### EXCEPTIONAL QUALITY – OUR PORTFOLIO FOR THE INDUSTRY

- **Outstanding performance:** Our portfolio excels in delivering premium quality that meets the highest standards of reliability and lightweight design.
- **Comprehensive product range:** We offer a complete range of solutions, including resilient-seated valves, valves for high pressure and high temperature applications, knife gate valves, as well as modular automation technology.
- **Reduced Life-Cycle costs:** Resource-efficient repairs with replaceable liners help minimize life-cycle costs.
- **Certified Quality Management:** Adhering to DIN EN ISO 9000 standards – we ensure high manufacturing quality while optimizing costs.
- **Customized configurations:** Leveraging years of expertise in customer processes, we provide tailored solutions for long-term, reliable performance.
- **Global presence:** with 1.000 employees worldwide, our headquarters in Hagen, and over 30 locations and production facilities in Italy, Sweden, China, and Thailand, we offer a truly global partnership.
- **Innovative solutions:** With over 50 years of intensive development, production, and distribution of isolation and control valves, EBRO stands as a leading global manufacturer with a continuous drive for innovation.

# SOLUTIONS FOR VARIOUS APPLICATIONS.



Sea Cooling Water  
Ballast  
Bilge  
Fire-fighting systems

Chemicals and crude oil  
Steam  
Diesel  
Heavy fuel oil

Black water  
Gray water  
Wet waste  
Sludge

Hydraulic oil  
Swimming pool  
Air conditioning  
Cooling water  
Drinking water

CHOOSE EBRO –  
YOUR RELIABLE PARTNER FOR  
EXCELLENCE AND TRUST.



## RESILIENT SEATED VALVES

### Versatile and reliable: Z011-A & Z014-A

The resilient seated butterfly valves with triple shaft bearing and replaceable liner have a wide range of applications, for example in supply lines, ballast, bilge, sea cooling water, grey water as well as black water applications.

### For Heavy-Duty applications: F012-A & F012-K1

These concentric, resilient-seated double-flanged valves feature a robust body and a vulcanized (molded-in) seat, engineered for heavy-duty applications in supply lines. These double-flanged valves are also commonly used as shipside valves.

A short face-to-face version (F012-K1) is also available.

#### Temperature range

-40 °C to +200 °C

#### Max. allowable pressure (PS)

Z011-A & Z014-A: 16 bar

F012-A: 25 bar

F012-K1: 16 bar



More information on  
resilient seated valves.



**Z011-A**  
Wafer-type  
DN 20 – DN 1000



**Z014-A**  
Lug-type  
DN 20 – DN 600



**F012-A & F012-K1**  
Double-flanged  
F012-A: DN 20 – DN 1200  
F012-K1: DN 20 – DN 2000

## PTFE VALVES

### Durable and safe

PTFE-lined butterfly and control valves are specially designed for use in chemically aggressive alkalis and acids. The minimum 3 mm thick lining made of pure PTFE guarantees optimum protection and ensures non-contact with metallic components with PTFE coated discs.

In conjunction with live loaded double shaft sealing, this valve series offers maximum operational safety.

PTFE valves are typically used in cargo systems.



More information on  
PTFE valves.



**T211-A**  
Wafer-type  
DN 50 – DN 300



**T214-A**  
Lug-type  
DN 50 – DN 300



**T212-A**  
Double-flanged  
DN 350 – DN 1000

## HIGH PERFORMANCE VALVES

### Reliable under extreme conditions

The double eccentric design, high-quality materials and precision machining ensure safety even under extreme operating conditions.

The HP valve is commonly used in areas such as fire fighting systems, exhaust systems as well as cargo systems.



More information on  
High Performance valves.



**HP111**  
Wafer-type  
DN 50 – DN 1200



**HP114**  
Lug-type  
DN 50 – DN 1200



**HP112**  
Double-flanged  
DN 80 – DN 600

## WB & WB11

### Modular and bidirectional

The modular Stafsjö knife gate valves in the WB series are easy to handle, have excellent flow characteristics and provide leak-free shut-off.

The full bore enables handling of liquids containing solids. The WB is also ideal for fish farming to control water distribution in fish tanks and in trawlers.

#### Temperature range

-10 °C to 120 °C

#### Max. allowable pressure (PS)

10 bar (depending on size)



More information on the WB & WB11.



### WB & WB11

Bidirectional

WB 11: DN 50 – DN 300

WB: DN 350 – DN 1600

## MV

### Versatile and unidirectional

The modular, unidirectional MV knife gate valve is suitable for handling both dry and wet media.

Therefore the MV knife gate valve is ideal for feeding systems (feeders and dispensers) on fish farms.

#### Temperature range

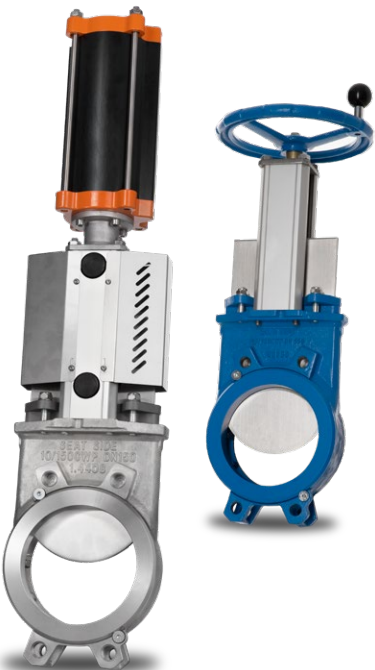
-10 °C to 120 °C

#### Max. allowable pressure (PS)

10 bar (depending on size)



More information on the MV.



### MV

Unidirectional

Semi-Lug

DN 50 – DN 1800





More information on  
actuator technology.



#### **E50 – E210**

Electric quarter-turn actuator  
24V AC/DC, 230V AC, 400V AC  
40 Nm – 4.000 Nm

## **ACTUATOR TECHNOLOGY**

### **Energy-efficient with uncompromising performance**

EBRO actuators enable butterfly valves and knife gate valves to be actuated with high-efficiency.

No compromises, but rather through seamless component integration, energy efficiency is enhanced. Individual configurations of product components are possible upon customer request to minimize total cost of ownership.

Our challenge is to precisely align valves and actuators with customer needs. Automation technology simplifies complex systems, reduces errors, and accelerates processes.



**Module E50 – E210**  
for control applications



**SC**  
Linear actuator  
Double-acting  
4.712 N – 48.255 N (6 bar)



**EB-SYD (Scotch-Yoke)**  
Pneumatic actuator  
Double-acting  
27 Nm – 9.768 Nm



**EB-SYS (Scotch-Yoke)**  
Pneumatic actuator  
Single-acting  
35 Nm – 3.590 Nm



## LOCAL

### **EBRO ARMATUREN** **Gebr. Bröer GmbH**

Ivo-Hauptmann-Ring 8  
D-22159 Hamburg  
Germany

☎ +49 40 645 037-0

## HEADQUARTERS

### **EBRO ARMATUREN** **Gebr. Bröer GmbH**

Karlstraße 8  
D-58135 Hagen  
Germany

☎ +49 2331 904-0

✉ [post@ebro-armaturen.com](mailto:post@ebro-armaturen.com)

🌐 [www.ebro-armaturen.com](http://www.ebro-armaturen.com)

### **Stafsjö Valves AB**

Störnings Väg 3  
SE-618 95 Stavsjö  
Sweden

☎ +46 11 39 31 00

✉ [sales@stafsjo.com](mailto:sales@stafsjo.com)

🌐 [www.stafsjo.com](http://www.stafsjo.com)

A Bröer Group company  
[www.broeer-group.com](http://www.broeer-group.com)

Follow us:

