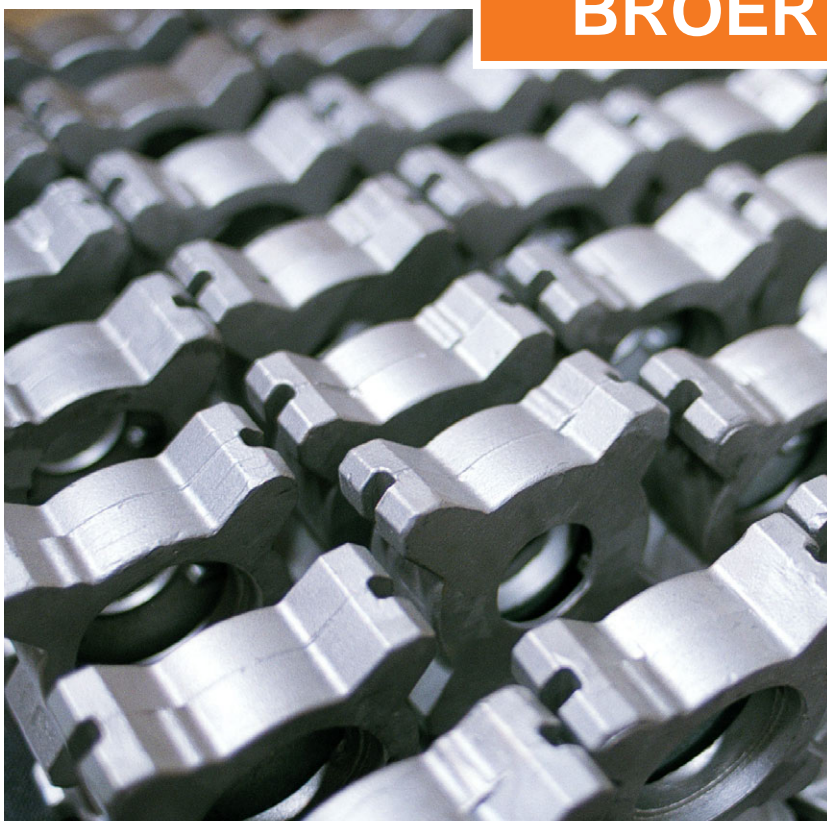




BRÖER GROUP



# A FAMILY BUSINESS



Reliable, fast and flexible – for over four decades these core values of a family-run firm have been the guarantee for lasting success. Short chains of command and highly motivated employees are the basis for the EBRO philosophy: always able to react quickly and flexibly to changes in products and markets.

Company founder Peter Bröer has passed on responsibility to his daughter Lydia to maintain the continuity and stability for the second generation. And our long-term investment in well-trained employees results in consistently high-quality products.

**Typically EBRO, in other words.**





## TWO STRONG BRANDS UNDER ONE ROOF

The companies EBRO ARMATUREN and Stafsjö Valves are acknowledged partners to the international plant construction industry, thanks to their mix of expert consulting services and a highly developed product palette.

EBRO butterfly valves and actuators fulfil the highest demands of industrial plant construction in complex and sensitive applications. For many years, Stafsjö has been one of the leading producers of high-quality knife-gate valves for the paper and pulp industry, water and sewage technology, biogas plants and other processing industries.

The merger of the two companies in 2006 brought our customers an additional level of cross-sector expertise, in practically all industrial applications. The Bröer Group offers a complete and well-engineered product

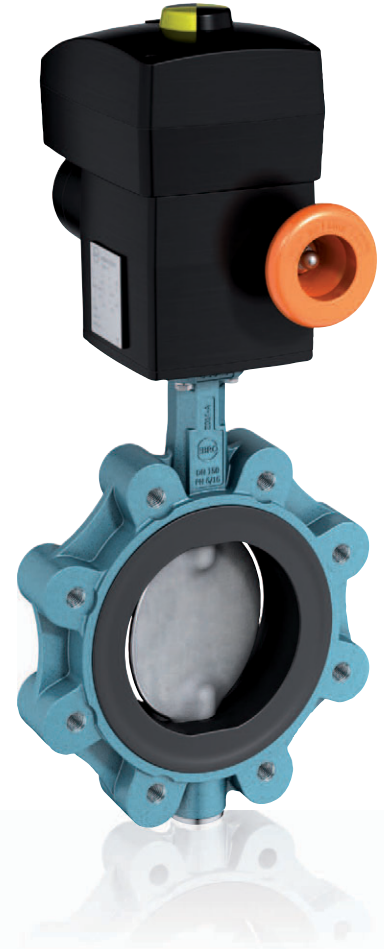
line that results from the technology transfer between the two companies. It has enabled us to keep pace with the growing and changing market.

As owner-managed family businesses, both Stafsjö and EBRO aim to achieve sustainable economic success. Our aims are based on long-term objectives. That is why we are continuously investing in research and development on the one hand and in the technical expertise of our employees on the other.

Today we are already unbeatable where reliability is the prime criterion and where plant downtimes need to be avoided at all costs.

**This benchmark applies worldwide.**

# EBRO BUTTERFLY VALVES



# EBRO AUTOMATION

## EVERYTHING FROM A SINGLE SOURCE

What many people do not know is that EBRO produces its actuators itself – and has done for 40 years. For the customer this means butterfly valves or gate valves can always be equipped with the optimally suited actuator. No compromise, always an optimally suited solution: that is the promise of the actuator series from EBRO.

## OPTIMALLY SYNCHRONISED

During the construction of our pneumatic rotary actuators, we prefer to use the “Scotch Yoke principle”, because actuators built in this way offer the maximum torque where it is needed – during the opening and closing of a valve. This fine tuning to the torque requirement demands a low piston diameter and thus also a significantly reduced air and energy requirement.

In comparison with actuators with a linear torque progression, this produces a reduction in air consumption of up to 40%.



## PROVEN QUALITY

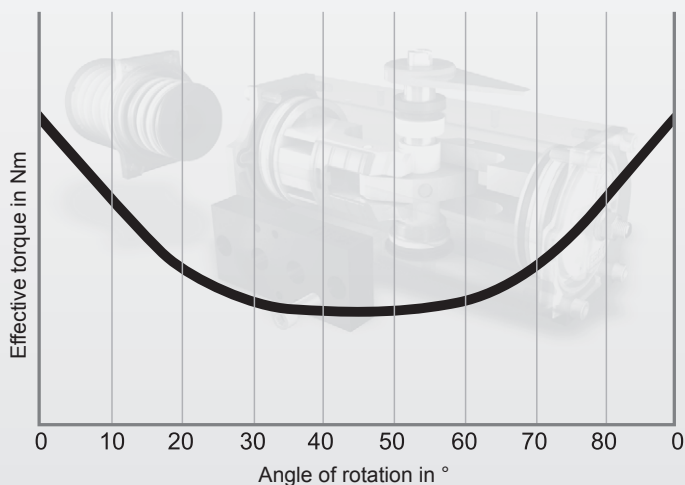
Valves and actuator technology from EBRO are always first choice when it comes down to keeping different media separate or controlling their flows. A broad-based programme, based on 40 years of experience, high quality that has been DIN EN ISO 9000-certified since 1993 and almost 1,000 employees who know their jobs perfectly, have made EBRO one of the world's leading manufacturers of valves.

# ON TECHNOLOGY

## ENERGY EFFICIENT COMPONENTS

Pneumatic actuators, single or double-action, have been used successfully for decades. But process air is expensive in the industry. Energy efficiency is thus the subject on everyone's lips. Companies are constantly on the look-out for cost-reducing solutions – and EBRO can supply them. As a manufacturer of butterfly valves and actuators, EBRO is able to harmonise individual product components to meet customer and operational requirements so exactly that operating costs can be reduced significantly.

### Torque progression of a double-action pneumatic rotary actuator. (Scotch Yoke)



## 100% CUSTOMER SATISFACTION

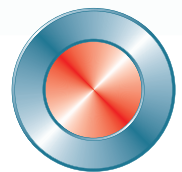
In terms of quality and reliability, Stafsjö knife-gate valves represent the state of the art.

The current programme, which offers solutions for the areas of bioenergy, wastewater technology and mining, is based on many years of experience gained in heavy-duty applications in the paper industry.

Sixteen production series in the sizes DN 50–DN 1600 offer a solution to practically every application and represent high quality, reliability and optimal life cycle costs.



# STAFSJÖ GATE VALVES



**Stafsjö**  
SINCE 1666

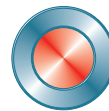
# THE WORLD OF EBRO AND STAFSJÖ

## Our international network



Headquarters:  
Karlstraße 8  
D-58135 Hagen

Phone +49(0)2331-9040  
Fax +49(0)2331-904111



**Stafsjö**  
SINCE 1666

Stafsjö Valves AB  
SE-618 95 STAVSJÖ

Phone +46 (0) 11 - 39 31 00  
Fax +46 (0) 11 - 39 30 67

You can find up-to-date addresses at  
[www.broer-group.com](http://www.broer-group.com)